

ORACLE®

Validated Integration

JD Edwards
EnterpriseOne

★ 9.0 ★ 9.1 ★ 9.2

KEY BENEFITS

- Built within the standard JD Edwards toolset
- Requires minimal technical knowledge to maintain

KEY FEATURES

- Standard JDE Interface
- Dependency Management
- Smart Notifications
- Email Attachments
- Transfer Outputs
- Detailed Recurrence Setup
- Event Based Scheduling
- Time Zones & Daylight Savings
- Data Selection & Processing Override
- Third party jobs
- Mobile Ready
- Analytical Reports

RELEASES SUPPORTED

- EnterpriseOne 8.12, 9.0, 9.1 and 9.2
- Works on all hardware platforms supported by E1

Eliminate JD Edwards Batch Job Challenges

Smart Scheduler is an advanced batch process scheduling tool developed using the standard JD Edwards toolset. Smart Scheduler was developed in 2010 and has been continuously improved to meet the more advanced needs of EnterpriseOne customers.

BUILT UPON THE LIMITATIONS OF THE STANDARD JDE SCHEDULER

Many JD Edwards customers who are using the standard JDE scheduler are challenged by its limitations, including:

- No Dependency Management
- Cannot Email Report Outputs
- Cannot Call Database Procedures
- Creates Job Backlog
- No Error Notification
- Limited Scheduling Options
- FAT Client Dependent
- Handling Multiple Time Zones (with DLS)
- Cannot Call OS Scripts

Smart Scheduler was built based on these limitations and with the confidence that “there is a better way!”

ROBUST FEATURE SET

Stream Management - Ability to group all jobs based on business processes where multiple and varying streams can be created for each module – Sales, GL, AR, AP, etc.

Advanced Dependency Management - Ability to process jobs based upon dependencies defined at the job level; if a job errors on the server the dependent job is not executed; also dependency on streams to ensure an AR stream runs after the Sales stream has completed successfully.

Detailed Recurrence Setup - Each stream can have its own recurrence pattern with jobs scheduled to run with predefined frequencies (such as every 15-20 minutes) for any designated time range where jobs are scheduled daily, weekly, monthly, quarterly, yearly, or based upon specific days or a fiscal date pattern.

Time Zone Support - Ability to schedule jobs in different time zones while still accounting for Daylight Savings rules.

Smart Notifications - Virtually eliminate manual monitoring requirements with Smart Notifications, the ability to send out notifications when a job completes, fails, or when it runs longer or shorter than the average time; can be configured at the stream level or job level

Events, Conditions & Actions - Configure how Streams proceed upon execution of certain pre-defined events or conditions.

Email Reports - Ability to email reports to users as PDF or CSV attachments

Transfer Outputs - Ability to take output of print queue and transfer to any network location

ORACLE®

Gold
Partner
Cloud Standard

FEATURE SET CONTINUED

Data Selection and Processing Option Overrides (RUNUBEXML)

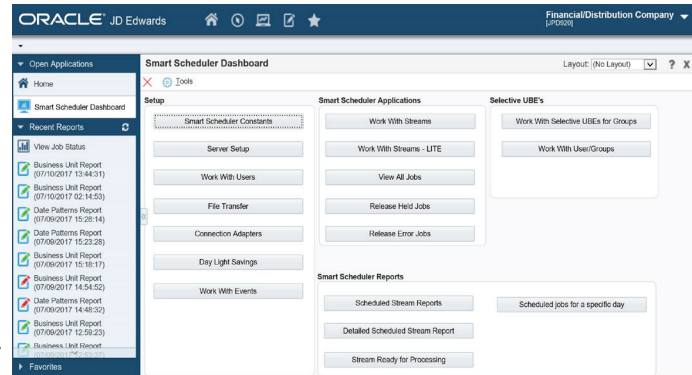
– Change data selection and Processing Option values dynamically at run time. Event Variables allow you to pass dynamic values to batch applications in Data Selection and/or Processing Option.

Lite Version – Ability to allow Users to schedule their own jobs and to receive notifications of job approvals (within boundaries defined by the organization/administrator).

3rd Party Support – 3rd party jobs can be scheduled from within JDE scheduler. Currently, Microsoft SQL Server and Oracle Database Server are supported. File Adapter is available to delete and archive files.

Interactive Dashboard - Web version to log into Smart Scheduler from within or outside of JDE; give users the ability to visualize status of jobs, interact with them, Pause/Resume streams as needed, Resume streams where jobs have ended in error (at click of button).

Analytical Reports - Executive reports including Detail & Summary Report, Upcoming Scheduled Streams and Jobs, Audit Reports based upon a date range, Average Time Report displays average run time for all reports, also Purge Report which deletes historical scheduled jobs.



AVAILABLE ADD-ONS

User-Submitted Job Monitoring - Manage output for user-submitted batch jobs

Smart Build - Automate and schedule Package Builds and Deployments

“This solves all of my problems and a few that I didn’t even know I had!”

- Jeremy, CNC Administrator

ORACLE VALIDATED INTEGRATION

Oracle Validated Integration, available through the Oracle PartnerNetwork (OPN), gives customers confidence that the integration of a complementary partner software product with an Oracle “on-premises” Application has been validated and the products work together as designed. This can help customers reduce risk, improve system implementation cycles, and provide for smoother upgrades and simpler maintenance.

ORACLE®

Validated Integration

JD Edwards
EnterpriseOne

★ 9.0 ★ 9.1 ★ 9.2

LEARN MORE

See Smart Scheduler’s features in action and find out how automated batch job processing can solve your job scheduling challenges. Visit smartscheduler.co/general/smart-scheduler-demo/ to watch the on-demand overview and demo.

ORACLE®

Gold Partner
Cloud Standard



Circular Edge
Redefining Impossible

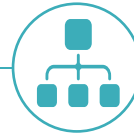
Smart Scheduler Founded

Based on customer need, multiple requests and years of testing, Circular Edge launches Smart Scheduler.



2010

2011



New Features: Email Attachments, Linear Dependency, Stream Hold

Smart Scheduler Achieves OVI

Oracle Validated Integration certification for EnterpriseOne 9.0 and 9.1



2012

2014



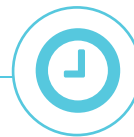
New Features: External Java Engine, Dependencies (Multiple & Stream), Notifications, Web Dashboard

New Features: Ability to Schedule 3rd Party Jobs, JDE Calendars, Print Immediate, Event Based Scheduling, Unified User Management



2015

2016



New Features: Ability to Change Data Selection/Processing Option, Time Zone Support

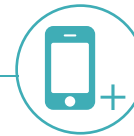
New Features: XML Engine, File Condition Check, Multi-Environment in Single Engine Support, Records Processed Check



2017

OVI Certification: EnterpriseOne 9.2

2018



New Features: Mobile App, OS Script Adapter, On Demand Stream, Stream Migration, Multiple Schedules, Reports, Disable Jobs in Stream

New Features: Call E1 Orchestrations, Smart Build Integration, Multiple Schedules for Streams, New Calendar Functionality, Load Balancing for Scheduled Jobs



2019

2020



New Features: Recurrence Across Days, Linux Adapter, Enhanced UI & Improved User Experience, Enhanced Reporting

Planned Features: REST, AS400 Adapters, Enhance Notification Framework (Text, Phone), High Availability



Roadmap

